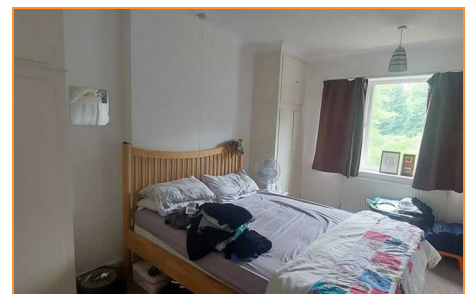
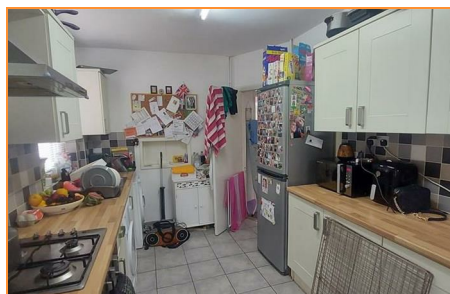


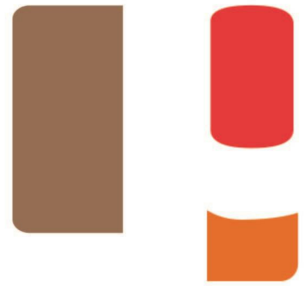
499 Oundle Road, Orton Longueville, Peterborough, Cambridgeshire, PE2 7DQ

£285,000

Three bedroom detached property, in the popular area Orton Longueville. The property comprises of an ENTRANCE HALL, FRONT ROOM, LOUNGE, KITCHEN, THREE BEDROOMS, BATHROOM, DRIVEWAY FOR SEVERAL CARS AND A REAR ENCLOSED GARDEN.

Council tax band - D





Entrance Hall

8'04 x 6'05 (2.54m x 1.96m)

L-Shape entrance hall, Upvc double glazed door to the front, stairs leading to the first floor, under the stairs cupboard, radiator, carpet flooring.

Front Room

12'01 x 11'08 (3.68m x 3.56m)

Upvc double glazed bay window to the front, fire place, radiator, carpet flooring.

Lounge

14'01 x 10'09 (4.29m x 3.28m)

Upvc double glazed window and Upvc double glazed door to the garden, fireplaces, radiator, garden.

Kitchen

14'08 x 8'04 (4.47m x 2.54m)

Upvc double glazed window to the side and Upvc double glazed door to the garden, matching wall and base units, electric cooker, gas hob with extractor hood, space for fridge freezer, space for washing machine and dishwasher, radiator, tiled flooring.

Landing

Doors leading to all rooms, carpet flooring.

Bedroom One

13'08 x 11'02 (4.17m x 3.40m)

Upvc double glazed window, radiator, carpet flooring.

Bedroom Two

11'03 x 10'02 (3.43m x 3.10m)

Upvc double glazed window, radiator, carpet flooring.

Bedroom Three

8'04 x 6'09 (2.54m x 2.06m)

Upvc double glazed window to the rear, radiator, carpet flooring.

Bathroom

6'11 x 5'03 (2.11m x 1.60m)

Upvc double glazed window to side, bath, W/C, hand basin, radiator, vinyl flooring.

Outside

Driveway suitable for several vehicles, fully enclosed rear garden.

